



Adobe

Tips  
Tricks  
Techniques

Adobe  
InDesign 2

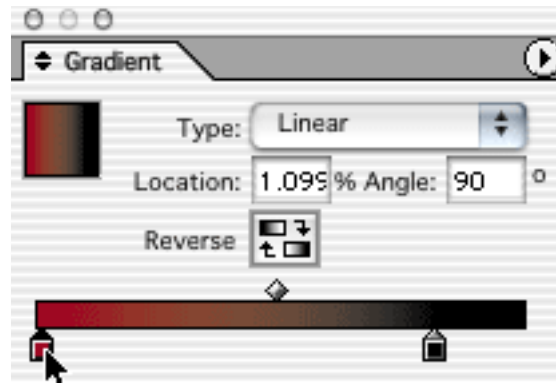


By Tim Cole

# replacing gradient colors with a swatch

InDesign shares a feature with Illustrator that enables you to select a color stop in a gradient and replace it by clicking on a color swatch in the swatches palette.

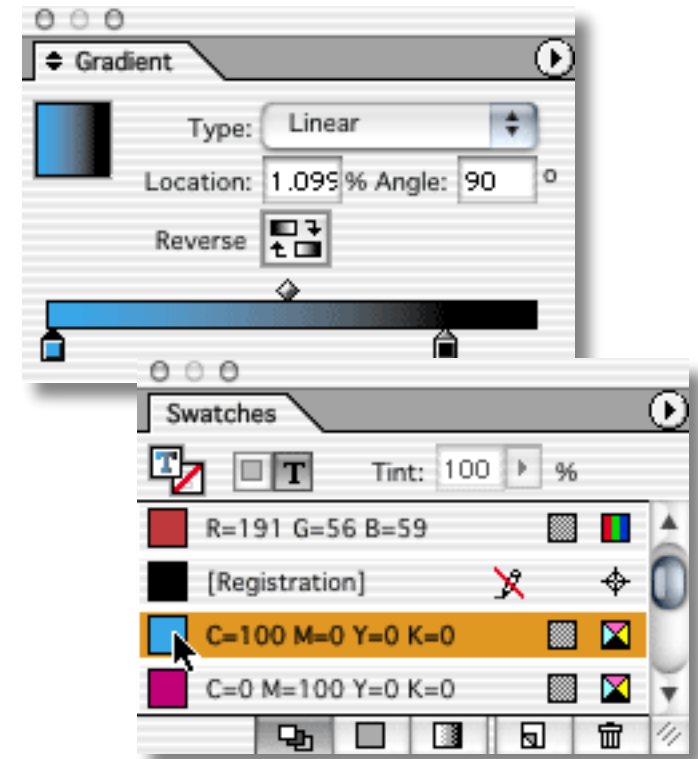
## SWATCH



1. Select the color stop in the gradient that you wish to replace.

2. Hold down the **option/alt** key and select the swatch of the color you wish to use. The color you option/alt selected replaces the color you selected in the gradient.

If you don't use the option/alt key, InDesign will replace the gradient with the solid swatch color.



## SWATCH